

INVESTING IN YOUR FUTURE...

Location, Location, and Location!

Park West Development has made available for sale the last of its commercial and residential sites in Park West, Mt. Pleasant's 1,700-acre premier planned development community.



Sites 1-5 are currently zoned for Commercial, Town Center or Office/Professional, which provide for a wide array of commercial, office and/or retail uses on the sites, and utility services are available to the properties. Sites 6 and 7 are zoned residential or commercial.

The first three sites are located on or just off of Stockdale Street, which serves as a connector road to contiguous Carolina Park, the site of the new Roper St. Francis Hospital opening in 2010, and to the Wando High School. Approximately 13,000 homes will exist at build-out of existing communities within three miles of Park West, excluding the Carolina Park development. With the connector road to Carolina Park complete, and when the Park West community is fully developed in 2011 (projected), traffic on Park West Boulevard is projected by Wilbur Smith Associates to total 35,000 vehicles per day.

Timing is critical as all selections are being made on a first-come, first-contractual sale basis. Prices have been adjusted to market conditions, and in a bulk sale will be further reduced by 20% if contracted before year end 2008. Regretfully, reservations cannot be accepted.



1. Stockdale Street: Site 6A-2 – 2.13 acres - **\$927,828**
2. Stockdale Street: Site 6B-1 – 0.37 acres - **\$161,172**
3. Salterbeck Street: Site 3A-6 – 1.00 acres - **\$450,000**
4. Park West Boulevard: Site 31-B – 2.64 acres - **\$977,466**
5. Bessemer Road: Site 33 – 0.50 acres - **\$210,000**
6. Park West Boulevard: Site 12-B – 7.20 acres - **\$720,000**
7. Park West Boulevard: Site 49-B – 2.65 acres - **\$560,000**

For additional information or to make an appointment to view these extraordinary commercial sites, please contact:

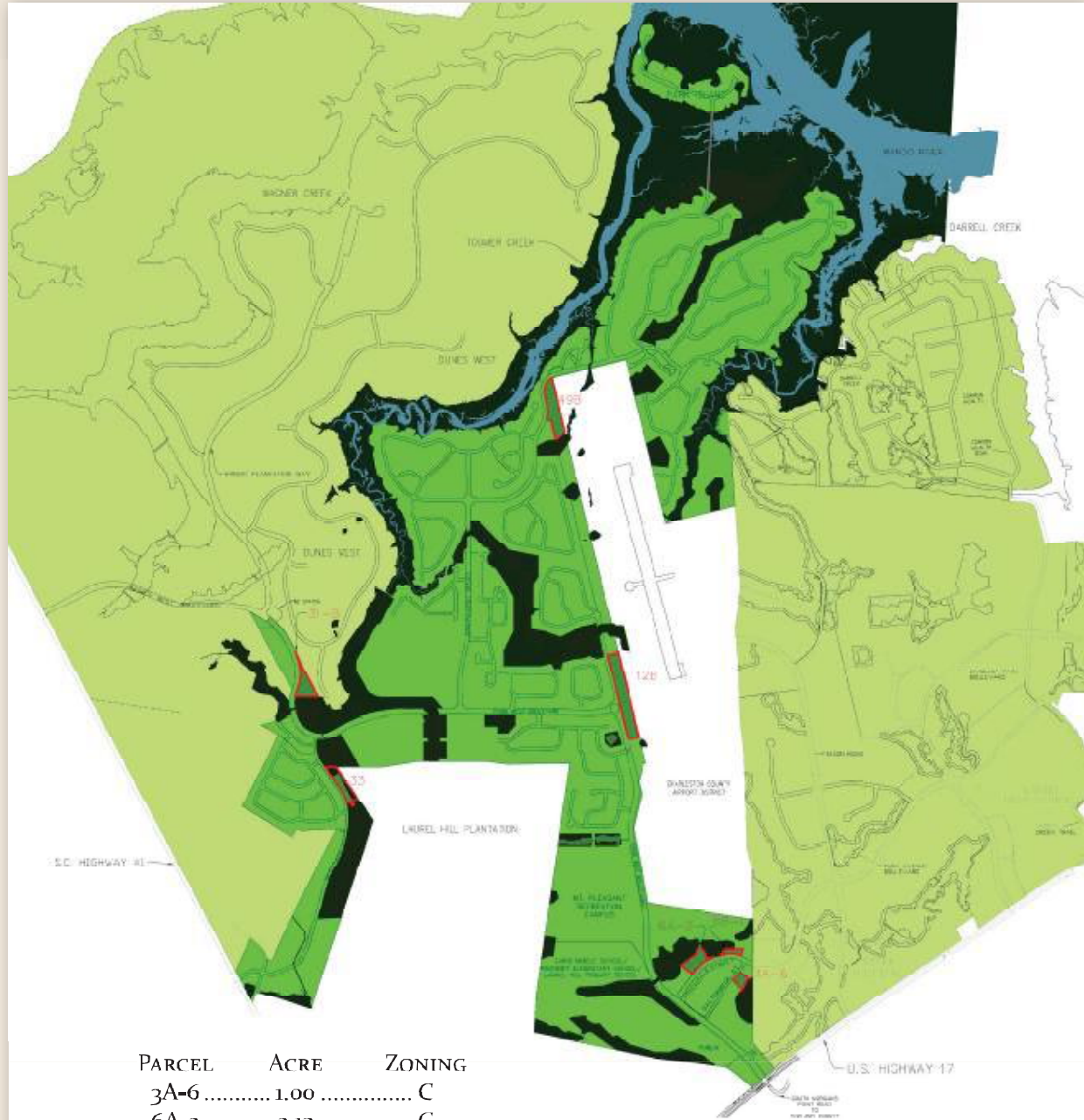
Kevin Steelman
LandTech Inc. of South Carolina
Office: 803-540-3474, Mobile: 803-348-2005
Email: ksteelman@landtechsc.com



Highway 17N, 4 miles North of Mt. Pleasant's Town Centre.

See site location map on reverse.

SITE LOCATION MAP



PARCEL	ACRE	ZONING
3A-6	1.00	C
6A-2	2.13	C
6B-1	0.37	C
31-B	2.64	TBD
33	0.50	TBD
12-B	7.65	RTH
49-B	4.82	RTH

